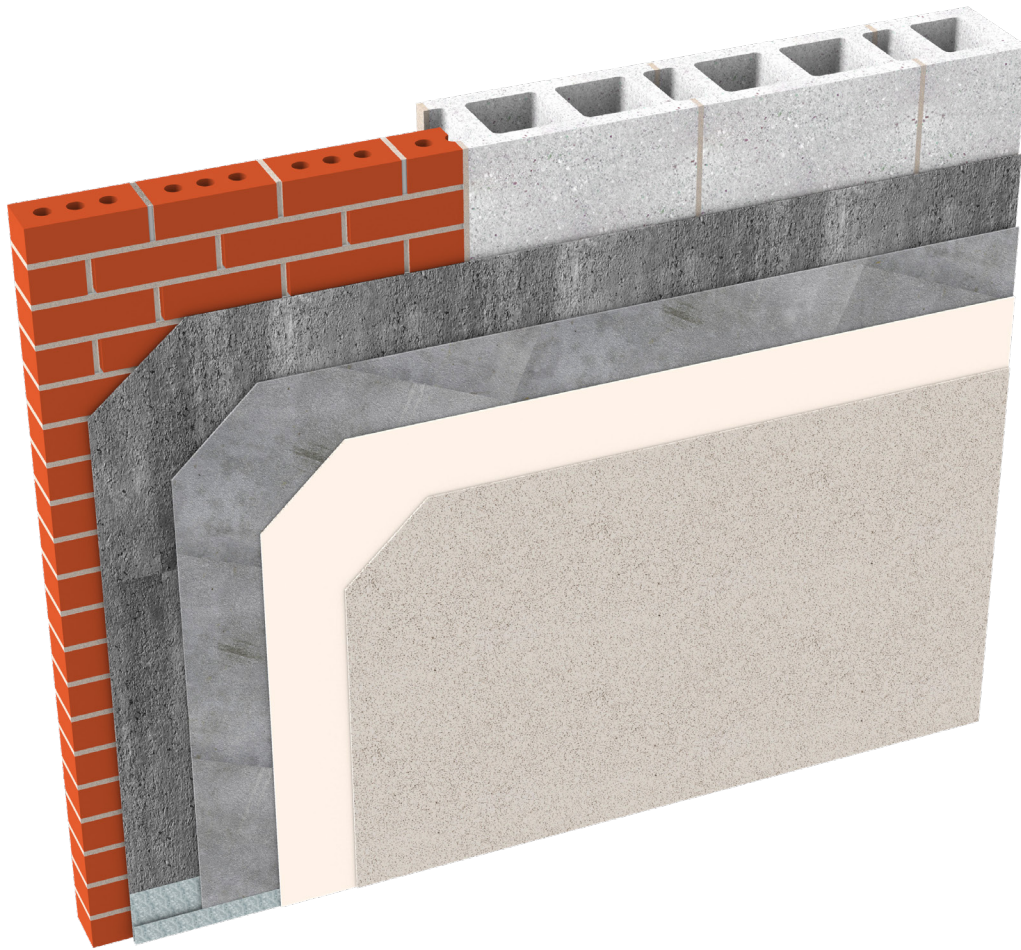


# Durex® Lite Coat Masonry

*Direct Applied Rendering Cladding System  
for Masonry*



High Impact  
Resistance



Durable



Water Repellent



Fast Curing

Protect. Enhance. Outperform.

## DURAbond

1-877-387-2266

info@durabond.com

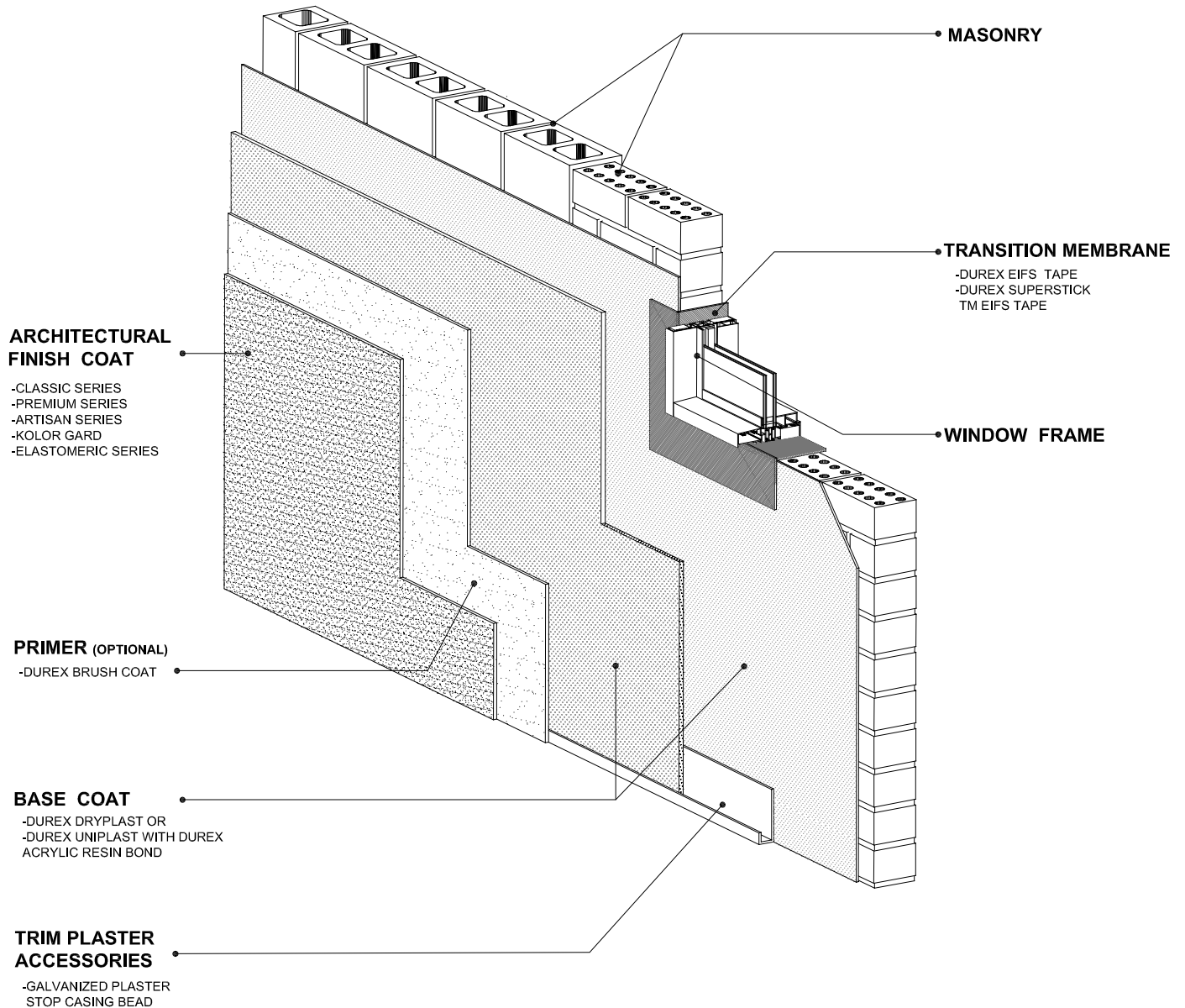
www.durabond.com



# Durex®

## Lite Coat Masonry

*Direct Applied Fiber Reinforced Coating System  
for Masonry Substrates*



# DURAbond

1-877-387-2266 - info@durabond.com - www.durabond.com

Durabond details are offered to assist in the development of project specific details; principles and variables incorporated in all details are the sole responsibility of the project professional(s).

*System Isometric  
& Components*

# Durex® Lite Coat MASONRY

## Direct Applied Rendering Cladding System for Masonry

<b>Description</b>	Durex® Lite Coat MASONRY is a non-insulated non-combustible direct applied wall coating system. The system consists of one or two base coats, (depending on substrate deviation rectification required), The finish texture coat can be selected from any one of the available Durex Architectural Coatings. The system is typically not reinforced but as an option the scratch coat can be reinforced with synthetic fibers.
<b>Uses</b>	Durex® Lite Coat MASONRY is an excellent cost effective coating system for both new and restoration work. It can be used as a parging system, best suited for masonry wall or solid & clean old plaster substrates.
<b>Advantages</b>	<ul style="list-style-type: none"> <li>• Economical</li> <li>• Easy to install</li> <li>• Excellent adhesion</li> <li>• Versatile</li> <li>• Excellent for both new construction and retrofit work</li> </ul>
<b>Limitations</b>	Durex® Lite Coat MASONRY is not recommended for use over wood and gypsum type surfaces in exterior applications.

### TECHNICAL DATA

SYSTEM COMPONENT	STANDARD/METHOD	RESULTS
<b>SUBSTRATE:</b>		
- Masonry	New or existing masonry	must be clean & sound (refer to system specifications for further details)
<b>WATER RESISTIVE BARRIER :</b>		
Not applicable		Durex Lite Coat MASONRY imparts water repellant properties
<b>REINFORCEMENT:</b>		
Not applicable		Additional reinforcement can be achieved by adding synthetic fibers to the scratch coat
<b>BASE COAT:</b>		
- Durex Uniplast / Acrylic Resin Bond	CAN/ULC S114	Rated noncombustible
- Durex Dryplast	CAN/ULC S114	Rated noncombustible
<b>FINISHES:</b>		
<b>Durex Architectural Coatings</b>	CAN/ULC S716.1 & CCMC Report # 13103-R	Durex Architectural Coatings Meet and exceed all requirements
Classic Series		
Premium Series		
Artisan Series		
Kolor Gard Series		
Elastomeric (FX) Series		
	<i>(Refer to product specific Technical Data Sheet and CCMC Evaluation Report # 13103-R for more detailed data)</i>	
<b>PERFORMANCE:</b>		
<b>Shear Bond Adhesion</b>	ASTM C882	11.20 MPa (1625 psi)
<b>Water absorption</b>	ASTM D570	1.9% (Uniplast)
<b>Coefficient of Water Absorption</b>	CCMC 5.5.1	0.0007 kg/(m <sup>2</sup> .s <sup>1/2</sup> ) (Flecrete)
<b>Tensile Strength</b>	ASTM C190	6.00 MPa (870 psi)

### Building Code Conformance:

Durex® Lite Coat MASONRY complies with the following building code requirements (refer to applicable building code)

<b>Classification</b>	Category 2	Non-Combustible Stucco cladding System
<b>Part 3</b>	Article 3.1.5.2 Article 3.2.3.7 & Table 3.2.3.7	Allowable Minor Combustible Components 0-10% Unprotected Openings
<b>Part 5</b>	Section 5.6.1	Protection from Precipitation
<b>Part 9</b>	Section 9.27.2	Required Protection from Precipitation

<b>Application</b>	Apply all Durex System Products and components, (base coat, finish coat, sealants) in strict accordance with Durabond's printed instructions. See Durabond's Standard Specifications/Details and Durex Product Data Sheets.
<b>Clean-up</b>	Clean all tools promptly after use with clean water. Do not allow mixes to dry on tools.
<b>Storage</b>	Store all Durex® Products and components in a dry vented, waterproof location, stacked off the ground with ambient temperatures above 5°C (41°F). Keep materials dry, protected from dampness and moisture and away from direct sunlight. KEEP FROM FREEZING.
<b>Health and Safety</b>	For information and advice on the safe handling, storage and disposal of chemical products, refer to the most recent SDS sheet containing physical, environmental, toxic and other safety/materials handling data. For industrial use only. Keep out of reach of children.
<b>Warranty</b>	Durabond Products Limited fully warrants their products when used and applied in strict accordance with the printed instructions on product mixing and product application. In any case Durabond's responsibility shall not exceed either the refund of the purchase price or the replacement of the purchased product.
<b>Technical Services</b>	Technical support is available upon request at <a href="mailto:info@durabond.com">info@durabond.com</a> . For the latest version of this data sheet, please visit our website at <a href="http://www.durabond.com">www.durabond.com</a> , call toll free at 1-877-DURABOND (387-2266) or speak with your Durabond Technical Coatings Ltd. sales representative.

# DURabond

**HEAD OFFICE**  
55 Underwriters Road  
Scarborough, ON M1R 3B4  
T 416.759.4474 F 416.759.4470

**MISSISSAUGA**  
6178 Netherhart Road  
Mississauga, ON L5T 1B7  
T 905.565.9283 F 905.565.9365

**EDMONTON**  
14345 120<sup>th</sup> Avenue  
Edmonton, AB T5L 2R8  
T 780.451.6364 F 780.453.9056

[INFO@DURABOND.COM](mailto:INFO@DURABOND.COM)

[WWW.DURABOND.COM](http://WWW.DURABOND.COM)

1.877.DURABOND (387.2266)

V2.01